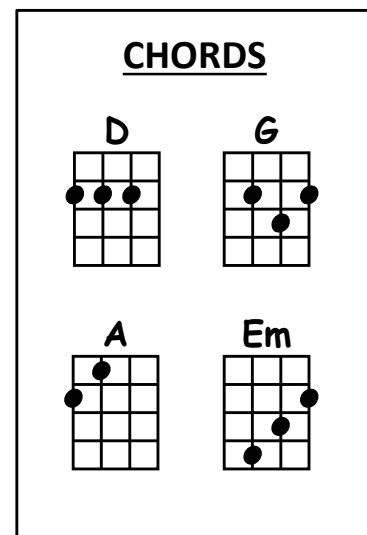


You're Still the One

Shania Twain, 1997. Ukulele arrangement Bob Guz, 2024

INTRO: *4 beats per box. See page 3 for details on the Intro Tab*

| | | | |
|-----|-----|-----|-----|
| [D] | [D] | [G] | [A] |
| [D] | [D] | [G] | [A] |



VERSE 1

[D] ♪ Looks like we [D] made it,
[G] Look how far we've [A] come my baby
[D] ♪ We mighta took the [D] long way,
[G] ♪ We knew we'd [A] get there someday
[D] ♪ They said, [D] ♪ "I bet [G] ♪ they'll never [A] make it"
But just [D] look at us [G] holding [A] on [A]
Still to– [D]gether, still [G] going [A] strong [G]

CHORUS 1: *See pages 4 - 6 for details on the Chorus Vocal options*

You're still the [D] one, you're still the one I [G] run to
[Em] ♪ The one that I be– [A]long to
[D] ♪ You're still the one I [G] want for [A] life [G]
You're still the [D] one, you're still the one that [G] I love
[Em] ♪ The only one I [A] dream of
[D] ♪ You're still the one I [G] kiss good– [A]night [*hold: A*]

VERSE 2

[*strum:* D] ♪ Ain't nothin' [D] better
[G] ♪ We beat the [A] odds together
[D] ♪ I'm glad we didn't [D] listen
[G] Look at what we [A] would be missin'
[D] ♪ They said, [D] ♪ "I bet [G] ♪ they'll never [A] make it"

But just [D] look at us [G] holding [A] on [A]
 Still to– [D]gether, still [G] going [A] strong [G]

CHORUS 2

You're still the [D] one, you're still the one I [G] run to
 [Em] ♪ The one that I be– [A]long to
 [D] ♪ You're still the one I [G] want for [A] life [G]
 You're still the [D] one, you're still the one that [G] I love
 [Em] ♪ The only one I [A] dream of
 [D] ♪ You're still the one I [G] kiss good– [A]night [A] ♪ You're still the...

INSTRUMENTAL BRIDGE: 4 beats per box

| | | | |
|---------------|-----|-----|-----|
| [D] ...one | [G] | [A] | [A] |
| [D] | [G] | [A] | [G] |

CHORUS 3

You're still the [D] one, you're still the one I [G] run to
 [Em] ♪ The one that I be– [A]long to
 [D] ♪ You're still the one I [G] want for [A] life [G]
 You're still the [D] one, you're still the one that [G] I love
 [Em] ♪ The only one I [A] dream of
 [D] ♪ You're still the one I [G] kiss good– [A]night [*hold: A*]

ENDING: Slower tempo. See page 7 for details on the Ending Tab

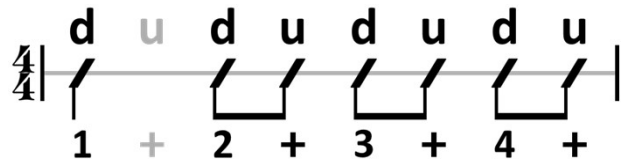
[*hold: D*] ♪ I'm so glad we [*hold: D*] made it,
 [*hold: G*] Look how far we've [*hold: A*] come my baby

END

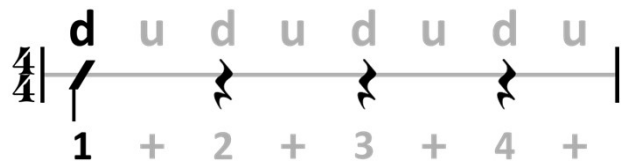
Notes & Tips

1. Strum Pattern

This strum pattern is used throughout the song:



For those who prefer, playing a single strum on the "1" count can be used as a simplified strum throughout the entire song:



In addition to this strum pattern, the following rhythm indicators are also used in the song sheet to show a change in the pattern:

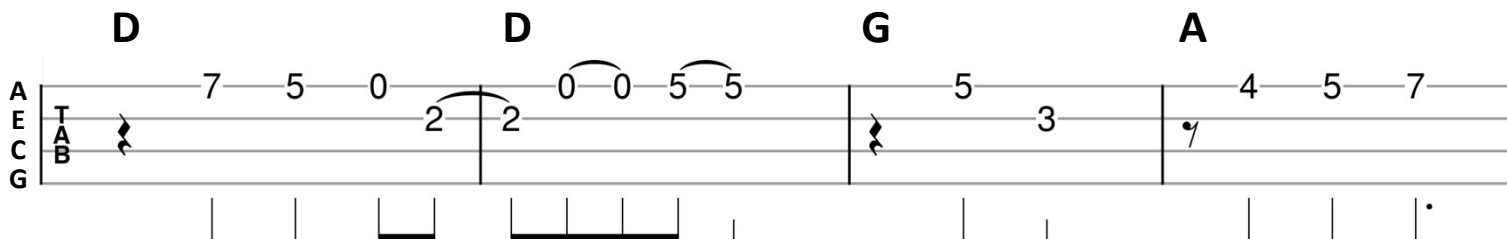
[*hold*: x] = Strum this chord (x) once and let it ring out

[*strum*: x] = Start/resume strumming on this chord (x) following a [*hold*] or a [*stop*]

☞ = Pause singing for a beat or take a breath

2. Intro Tab

The following tab can be played during the Intro, while other players strum the indicated chords. This can be played with either high-G or low-G tuning.



Notes & Tips

3. Chorus Vocals

In each Chorus, there is a vocal melody part (A below) and an optional harmony part (B). Singing an octave higher or lower than shown works equally well.

A. Melody

G **D** **G**

You're still the one, you're still the one I run to,

A
E
C
G

T
A
B

2 2 2 2 | 2 2 0 2 1 | 4 4 | 2 0

Em **A**

the one that I belong to,

A
E
C
G

T
A
B

0 3 2 0 | 2 1 1 | 2 0 2

D **G** **A**

you're still the one I want for life.

A
E
C
G

T
A
B

2 2 0 2 1 | 4 4 | 0 | 1 -

G **D** **G**

You're still the one, you're still the one that I love,

A
E
C
G

T
A
B

2 2 2 2 | 2 2 0 2 1 | 4 4 | 2 0

Notes & Tips

3. Chorus Vocals, continued

Em **A**

the on - ly one I dream of,

A
E
C
G
T
A
B

D **G** **A**

you're still the one I kiss good - night.

A
E
C
G
T
A
B

B. Harmony

G **D** **G**

You're still the one, you're still the one I run to,

A
E
C
G
T
A
B

Em **A**

the one that I be - long to,

A
E
C
G
T
A
B

Notes & Tips

3. Chorus Vocals, continued

D **G** **A**

you're still the one I want for life.

A
E
C
G
T
A
B

G **D** **G**

You're still the one, you're still the one that I love,

A
E
C
G
T
A
B

Em **A**

the on - ly one I dream of,

A
E
C
G
T
A
B

D **G** **A**

you're still the one I kiss good - night.

A
E
C
G
T
A
B

Notes & Tips

4. Ending Tab

The following tab can be played during the last line of the Ending, while other players strum the indicated chords. The lyrics are included for reference. This can be played with either high-G or low-G tuning.

| | | | | | | |
|---|---------------------------|--|-------------------------|-----------|------------|-----------|
| | [<i>hold: G</i>] | | [<i>hold: A</i>] | | | |
| A | 2 | | 0 | | | |
| E | 3 | | 0 | 0 | 2 | 3 |
| C | 2 | | 1 | 1 | 2 | 4 |
| G | 0 | | 2 | | | |
| | | | | | | |
| | <i>Look how far we've</i> | | <i>come</i> | <i>my</i> | <i>ba-</i> | <i>by</i> |